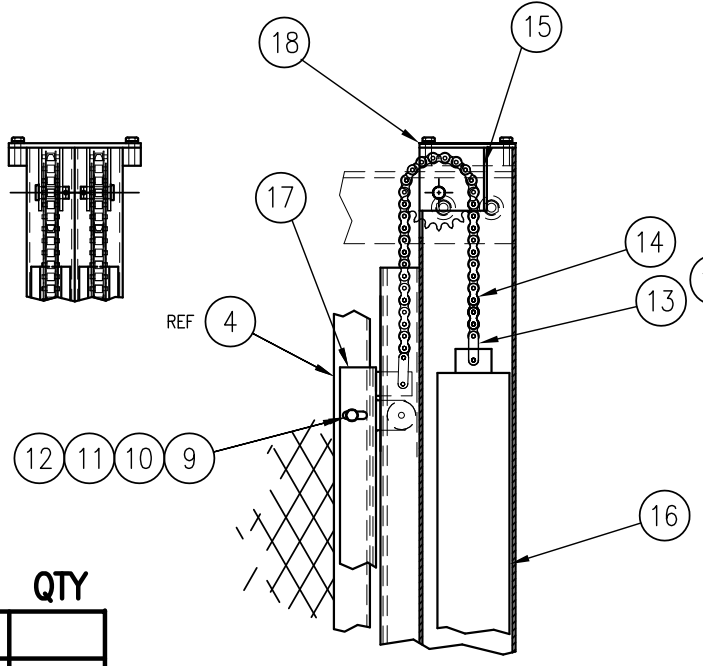
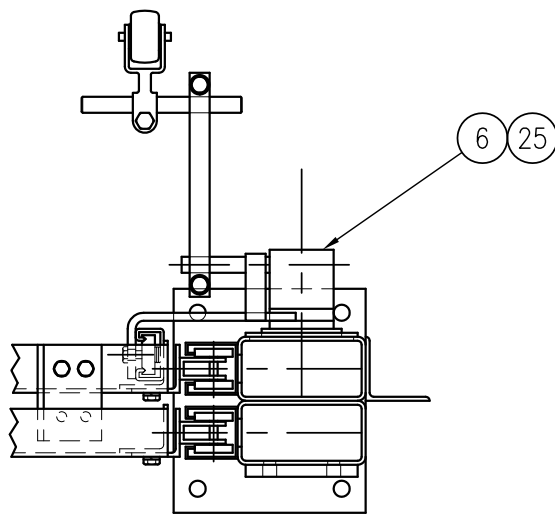
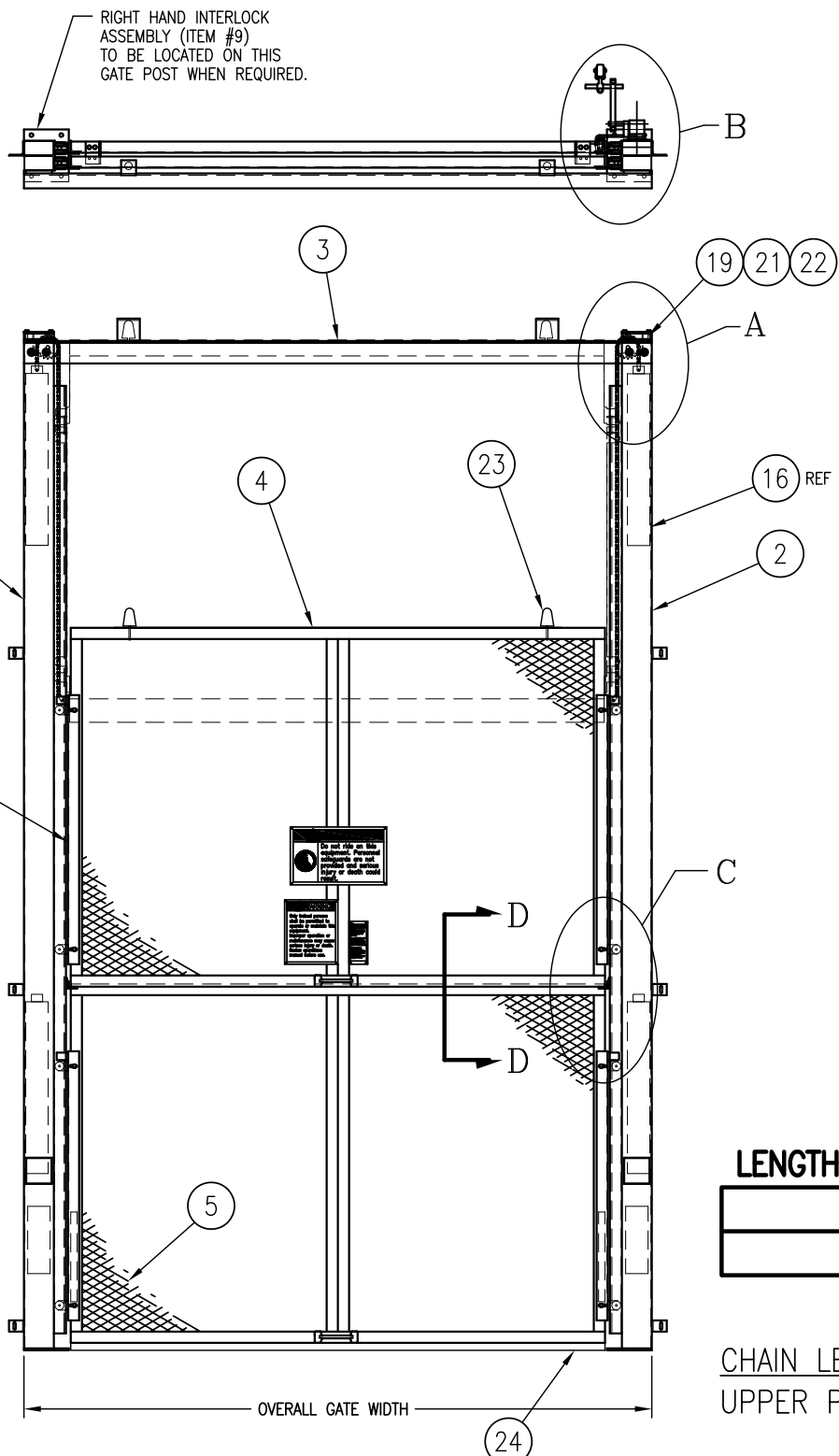
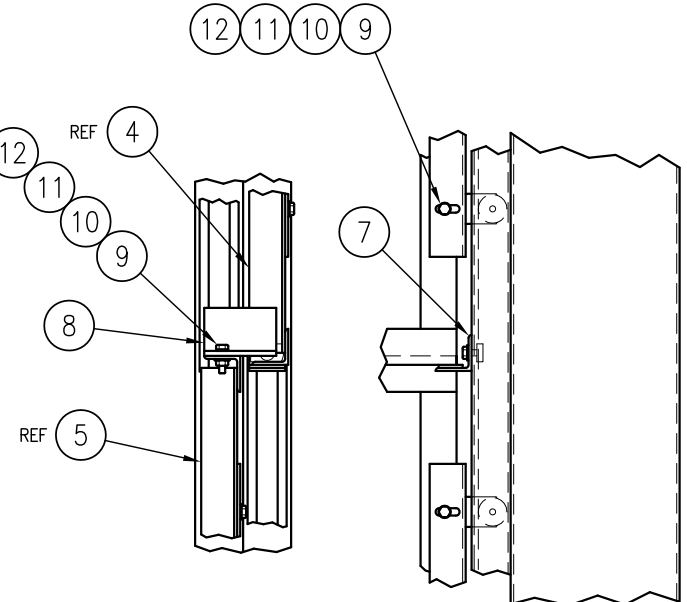


WILDECK, INC. RESERVES PROPRIETARY RIGHTS TO THIS DRAWING AND DATA SHOWN THEREON. SAID DRAWING AND/OR DATA ARE **CONFIDENTIAL** AND ARE NOT TO BE USED OR REPRODUCED FOR ANY PURPOSE WITHOUT THE WRITTEN CONSENT OF WILDECK, INC.



LENGTH	QTY

SECTION D-D



CHAIN LENGTHS: (ASSUMES PANEL HEIGHTS ARE THE SAME)
 UPPER PANEL CHAIN LENGTH = LOAD HT. - PANEL HT. + 20 1/2" SCALE 3:1

LOWER PANEL CHAIN LENGTH = LOAD HT. + 20 1/2"

NOTE: UPPER CHAIN SHOULD BE SHORTER THAN LOWER CHAIN

BILL OF MATERIALS

ITEM	QTY.	DESCRIPTION	PART No.	SUFFIX
1	1	BI-PANEL VERTICAL GATE POST - L.H.	2430-A	WI
2	1	BI-PANEL VERTICAL GATE POST - R.H.	2433-A	WI
3	1	VERTICAL GATE CROSS MEMBER	1137-A	WI
4	1	BI-PANEL VERTICAL GATE PANEL - UPPER	2436-B	WI
5	1	BI-PANEL VERTICAL GATE PANEL - LOWER	2435-B	WI
6	1	L.H. HG-1 INTERLOCK FOR V.A. GATE	1287-B	PUR
6	1	R.H. HG-1 INTERLOCK FOR V.A. GATE	1288-B	PUR
7	2	BI-PANEL VERT. ACTING GATE UPPER PANEL STOP	1327-A	STK
8	2	GATE TAB	1336-A	STK
9	16	HHCS, 1/4-20 x 3/4"		STK
10	12	NUT, 1/4-20		STK
11	12	FLAT WASHER, 1/4"		STK
12	16	LOCK WASHER, 1/4"		STK
*	13	DOUBLE PITCH #40 MASTER-LINK	2450	STK
*	14	#40 ROLLER CHAIN		PUR
*	15	SPROCKET BRACKET FOR BI-PANEL GATE	2017-A	STK
*	16	VERTICAL GATE COUNTER WEIGHT	1141-A	WI
*	17	BI-PANEL VERTICAL GATE TROLLEY BRACKET	2019-A	WI
*	18	SCREW, 1/4-20 x 3/4" LG.		STK
*	19	HHCS, 1/2-13 x 1"		STK
*	21	FLAT WASHER, 1/2"		STK
*	22	LOCK WASHER, 1/2"		STK
**	23	BUMPER, BLACK MATTE RUBBER	2452	STK
**	24	CLOSED CELL NEOPRENE GASKET	2451	STK
**	25	STICKER, "DO NOT TAMPER..."	3716	STK

* INDICATES PARTS THAT ARE PRE-ASSEMBLED WITH THE GATE POSTS
 ** INDICATES PARTS THAT ARE PRE-ASSEMBLED WITH THE GATE PANELS

Y = LOAD HT. + PANEL HT. + 6 1/4" + RAMP (IF REQ'D)
 OR
 Y = GATE POST HT. + 2 1/4"

JOB NO: _____
 TOTAL REQ'D: _____



BI-PANEL VERTICAL ACTING GATE ASSEMBLY

DATE: 1-24-00
 DRN BY JAK

2434 REV 2